

**BAYHILL ESTATES P.U.D.**

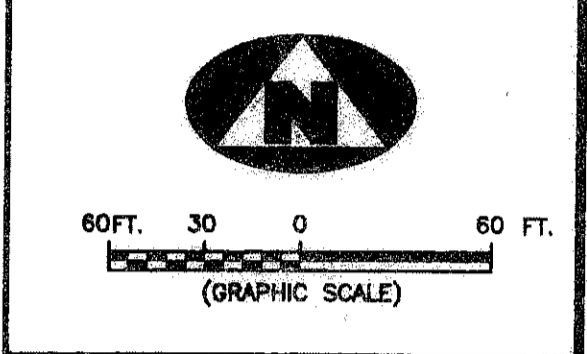
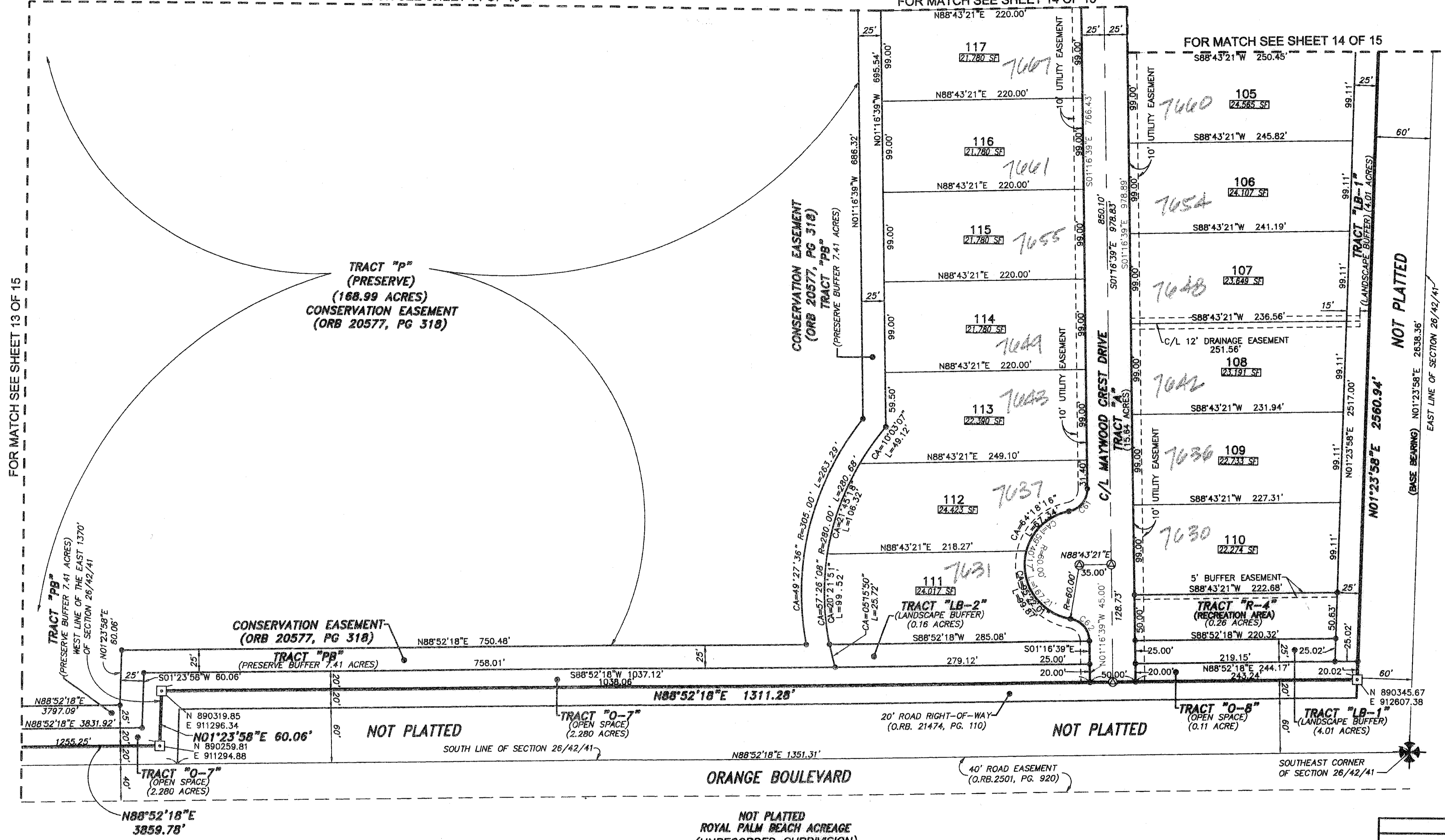
(A PART OF STONEWALL ESTATES PLANNED UNIT DEVELOPMENT)  
 BEING A REPLAT OF TRACT "ER", BAYHILL CLUBHOUSE AND MAINTENANCE AREA, RECORDED IN PLAT BOOK 109, PAGE 158, PUBLIC RECORDS, PALM BEACH COUNTY AND LYING AND BEING IN SECTION 26, TOWNSHIP 42 SOUTH, RANGE 41 EAST, PALM BEACH COUNTY, FLORIDA.  
 A PORTION OF

30

FOR MATCH SEE SHEET 14 OF 15

FOR MATCH SEE SHEET 14 OF 15

FOR MATCH SEE SHEET 14 OF 15



IBS GOLF AND COUNTRY CLUB PLAT NO. 7  
 (PLAT BOOK 67, PAGE 192)

FOR MATCH SEE SHEET 13 OF 15

STATIONARY BAYHILL ESTATES  
 BOOK 110 PAGE 20  
 RECORDING 50 B  
 ALONG RE  
 59  
 826  
 STONEWALL ESTATES

CURVE	RADIUS	CENTRAL ANGLE	LENGTH	CHORD DISTANCE	CHORD BEARING
C61	25.00'	79°50'09"	34.83'	32.08'	N38°38'26"E
C62	25.00'	79°50'09"	34.83'	32.08'	N41°11'43"W

**SURVEYOR'S NOTES**

- THE BASE BEARING, AS SHOWN HEREON, IS N01°23'58"E ALONG THE EAST LINE OF SECTION 26/42/41.
- IN THOSE INSTANCES WHERE UTILITY OR DRAINAGE STRUCTURES ARE CONSTRUCTED IN CONFLICT WITH THE PLATTED PERMANENT CONTROL POINT POSITION STRADDLERS MONUMENTED AS PERMANENT CONTROL POINTS WILL BE SET TO REFERENCE THE PLATTED POSITION.
- OTHERWISE NOTED.
- THIS INSTRUMENT WAS PREPARED BY WIL R. VAN CAMPEN, P.S.M. NO. 2424, IN AND FOR THE OFFICES OF ASSOCIATED LAND SURVEYORS, INC., 4152 WEST BLUE HERON BOULEVARD, SUITE 121, RIVIERA BEACH, FLORIDA, 33407.
- THE COORDINATES SHOWN HEREON ARE STATE PLANE GRID COORDINATES ACCORDING TO THE TRANSVERSE MERCATOR PROJECTION OF THE FLORIDA EAST ZONE, N.A.D. 1983, PER THE 1990 ADJUSTMENT.
- THE GROUND DISTANCE TO GRID DISTANCE SCALE FACTOR IS 1.000015 (GROUND DISTANCE X SCALE FACTOR = GRID DISTANCE).
- THE LINEAR DIMENSIONS SHOWN HEREON ARE GROUND DISTANCES IN U.S. FEET AND DECIMAL PARTS THEREOF.
- THE BEARINGS SHOWN HEREON ARE BASED ON STATE PLANE GRID AZIMUTHS.

**LEGEND**

(R)	DENOTES A RADIAL LINE	R	DENOTES RADIUS DISTANCE
C/L	DENOTES A CENTERLINE	L	DENOTES ARC LENGTH DISTANCE
DE	DENOTES DRAINAGE EASEMENT	CA	DENOTES CENTRAL ANGLE
WLE	DENOTES WATER LINE EASEMENT	LCB	DENOTES LONG CHORD BEARING
LS	DENOTES LIFT STATION EASEMENT	CHD	DENOTES CHORD DISTANCE
PS	DENOTES PAGE	ORB	DENOTES OFFICIAL RECORDS BOOK
BE	DENOTES BUFFER EASEMENT	RWBE	DENOTES RIGHTS-OF-WAY BUFFER EASEMENT
LMAE	DENOTES LAKE MAINTENANCE ACCESS EASEMENT		
		N = 123456789	DENOTES A NORTHING AND EASTING COORDINATE
		E = 123456789	DENOTES A SET PERMANENT REFERENCE MONUMENT (L.B. 4133)
			DENOTES A FOUND PERMANENT REFERENCE MONUMENT (L.B. 7344)
			DENOTES A FOUND PERMANENT CONTROL POINT
			DENOTES A SET PERMANENT CONTROL POINT (L.B. 7344)

**SHEET INDEX**

(NOT TO SCALE)

6 = INDICATES SHEET NUMBER OF 15

**RECORD PLAT OF BAYHILL ESTATES PUD**

FILE: P87PLAT

FB:	WO.NO.: P87
SCALE: 1"=60'	DATE: 2/01/05
DWN: EB	SHEET 15 OF 15

**ASSOCIATED LAND SURVEYORS, INC.**  
 4152 W. BLUE HERON BOULEVARD—SUITE 121  
 RIVIERA BEACH FLORIDA 33404 LB NO. 7344  
 PHONE: (561) 848-2102 FAX: (561) 844-9659 EMAIL: ALLSURVEY@AOL.COM